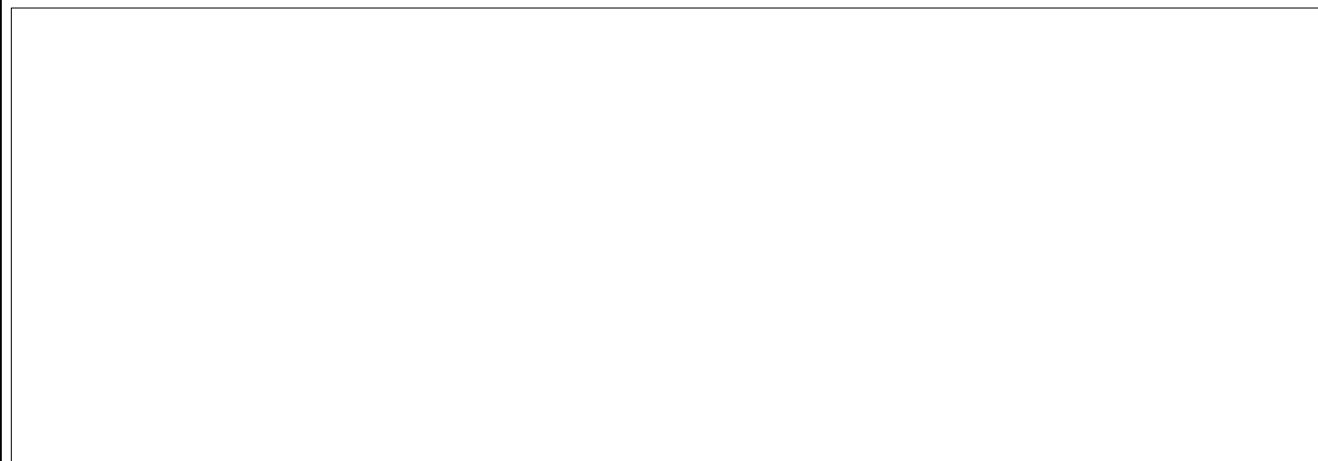


Ing. Vincenzo Spagnoli

COMUNE DI ORVIETO

PROVINCIA DI TERNI



PROGETTO PER AMPLIAMENTO POLO PRODUTTIVO ESISTENTE
ATTRAVERSO VARIANTE AL P.R.G. AI SENSI
DEL D.P.R. 160/2010 DEL 07/09/2010
INSERIMENTO ZONA D2b ATTREZZATURE ALBERGHIERE E
CONGRESSUALI

ALLEG. N.

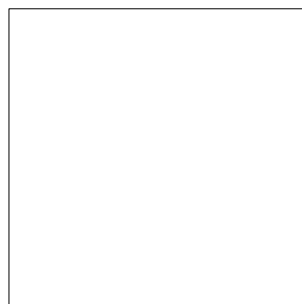
G

RISTORANTE ESISTENTE
CALCOLO SUPERFICIE COPERTA
CALCOLO VOLUME

Geom. Luca Foscoli

Proprietà

F.C. GROUP s.r.l.



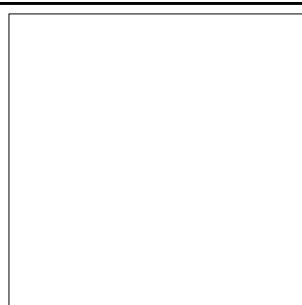
Scala:

1:200

Data:



I Tecnici:



Geom. Luca Foscoli
Via Paglia n.6
05018 – Orvieto (TR)
Tel. 0763/300559

Ing. Vincenzo Spagnoli
Via Del Fosso n.7
05018 – Orvieto (TR)
Tel. 0763/302225

Calcolo Voume
RISTORANTE ESISTENTE
(non oggetto di intervento)

Superfici Planimetriche

Piano Interrato

1- $16.30 \times 8.40 = 136.92 \text{mq.}$

2- $8.40 \times 4.60 = 38.64 \text{mq.}$

Tot. = 175.56 mq.

Piano Terra

1- $13.05 \times 13.10 = 170.95 \text{mq.}$

2- $4.80 \times 1.80 = 8.64 \text{mq.}$

3- $5.20 \times 6.50 = 33.80 \text{mq.}$

4- $1.85 \times 4.40 = 8.14 \text{mq.}$

5- $4.40 \times 4.70 / 2 = 10.34 \text{mq.}$

6- $6.20 \times 2.30 = 14.26 \text{mq.}$

7- $(6.20 + 5.60) / 2 \times 2.30 = 13.57 \text{mq.}$

8- $8.30 \times 3.20 = 26.56 \text{mq.}$

Tot. = 286.26 mq.

Superficie Prospetto Piano Terra

Prospetto Ovest

$(2.70 + 2.60) / 2 \times 0.80 = 2.12 \text{mq.}$

$9.10 \times 2.70 = 24.57 \text{mq.}$

$8.40 \times (2.75 + 0.20) = 24.78 \text{mq.}$

$6.20 \times (2.75 + 0.20) = 18.29 \text{mq.}$

Prospetto Nord

$1.80 \times 2.70 = 4.86 \text{mq.}$

$6.50 \times 2.60 = 16.90 \text{mq.}$

$6.56 \times 2.70 = 17.71 \text{mq.}$

Prospetto Sud

$(2.75 + 0.20) \times 8.45 = 24.93 \text{mq.}$

Tot. = 134.16 mq.

Perimetro Piano Terra

$13.10 + 6.45 + 1.85 + 0.80 + 6.50 + 0.80 + 1.80 + 4.80 + 1.80 + 4.40 +$
 $3.20 + 8.30 + 3.20 + 6.20 + 2.30 + 0.60 + 2.40 + 6.20 + 4.45 = 79.15 \text{ ml.}$

Hmp Piano Terra = $134.16 / 79.15 = 1.69 \text{ml.}$

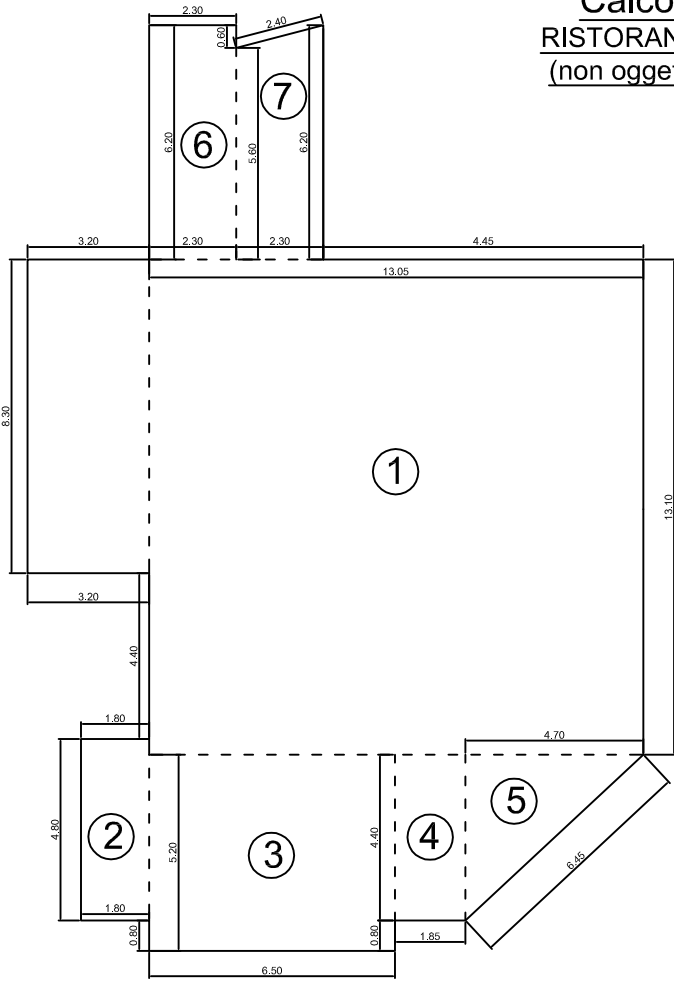
VOLUME

Piano Terra

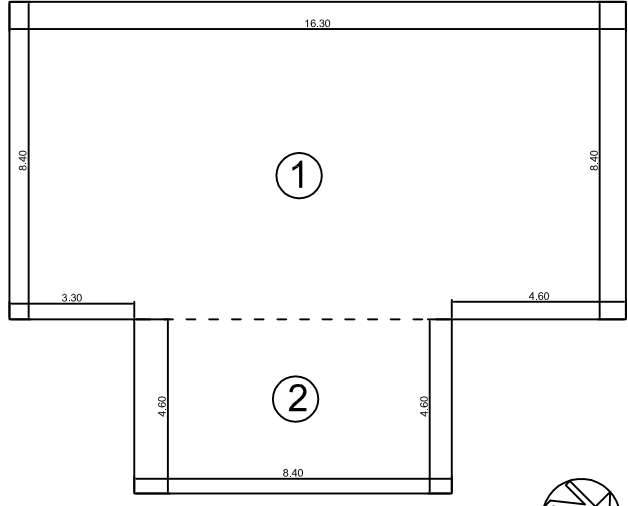
$268.26 \times 1.69 = 483.78 \text{mc.}$

VOLUME TOTALE STATO DI PROGETTO = 483.78 mc.

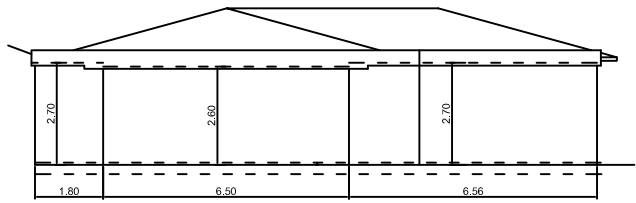
Calcolo Volume
RISTORANTE ESISTENTE
 (non oggetto di intervento)



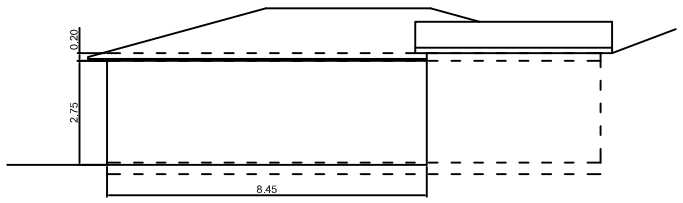
PIANO TERRA



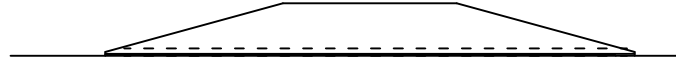
PIANO INTERRATO



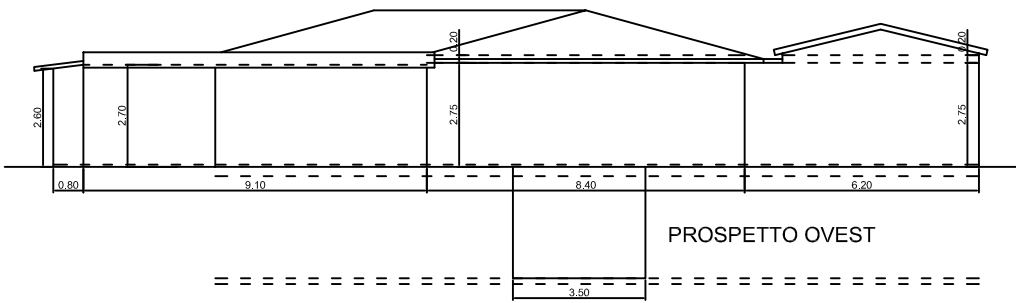
PROSPETTO NORD



PROSPETTO SUD



PROSPETTO EST



PROSPETTO OVEST

Calcolo Superficie Coperta

RISTORANTE ESISTENTE

(non oggetto di intervento)

Superfici Planimetriche

Piano Interrato

1- $16.30 \times 8.40 = 136.92 \text{mq.}$

2- $8.40 \times 4.60 = 38.64 \text{mq.}$

Tot. = 175.56 mq.

Piano Terra

1- $13.05 \times 13.10 = 170.95 \text{mq.}$

2- $4.80 \times 1.80 = 8.64 \text{mq.}$

3- $5.20 \times 6.50 = 33.80 \text{mq.}$

4- $1.85 \times 4.40 = 8.14 \text{mq.}$

5- $4.40 \times 4.70 / 2 = 10.34 \text{mq.}$

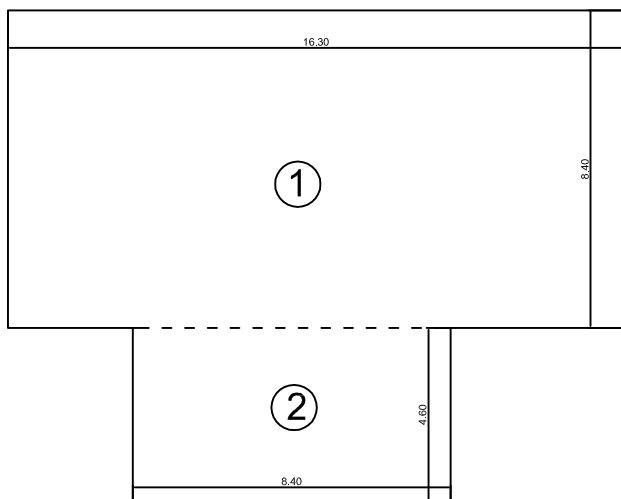
6- $6.20 \times 2.30 = 14.26 \text{mq.}$

7- $(6.20 + 5.60) / 2 \times 2.30 = 13.57 \text{mq.}$

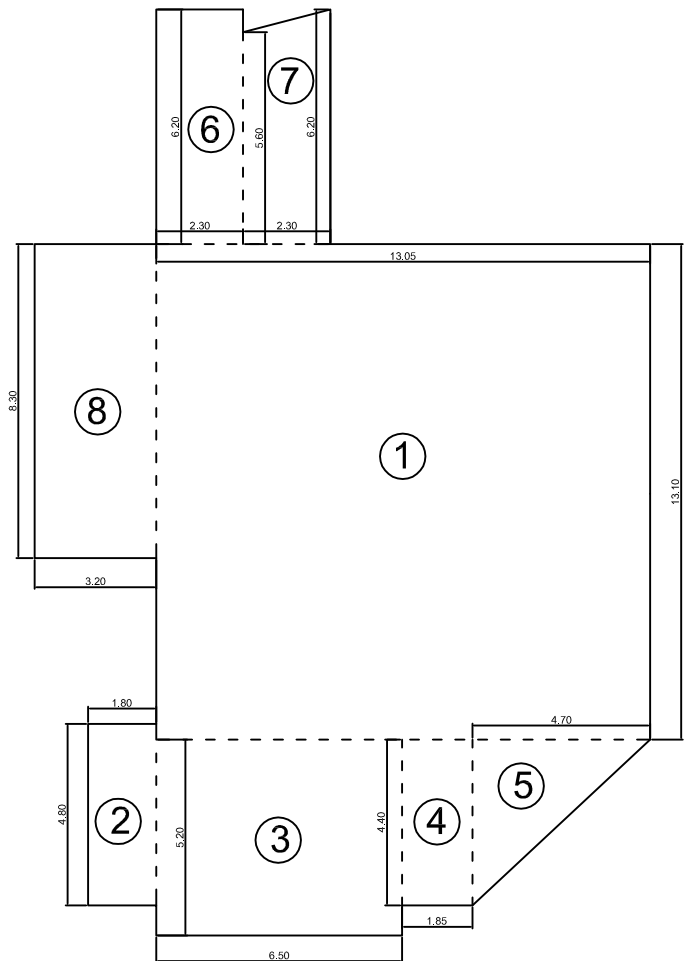
8- $8.30 \times 3.20 = 26.56 \text{mq.}$

Tot. = 286.26 mq.

SUPERFICIE COPERTA STATO DI PROGETTO = 461.82 mq.



PIANO INTERRATO



PIANO TERRA